



# The management of common pasture by local authorities

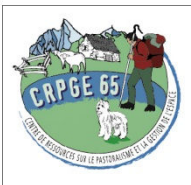
**Example in High Pyrenees**



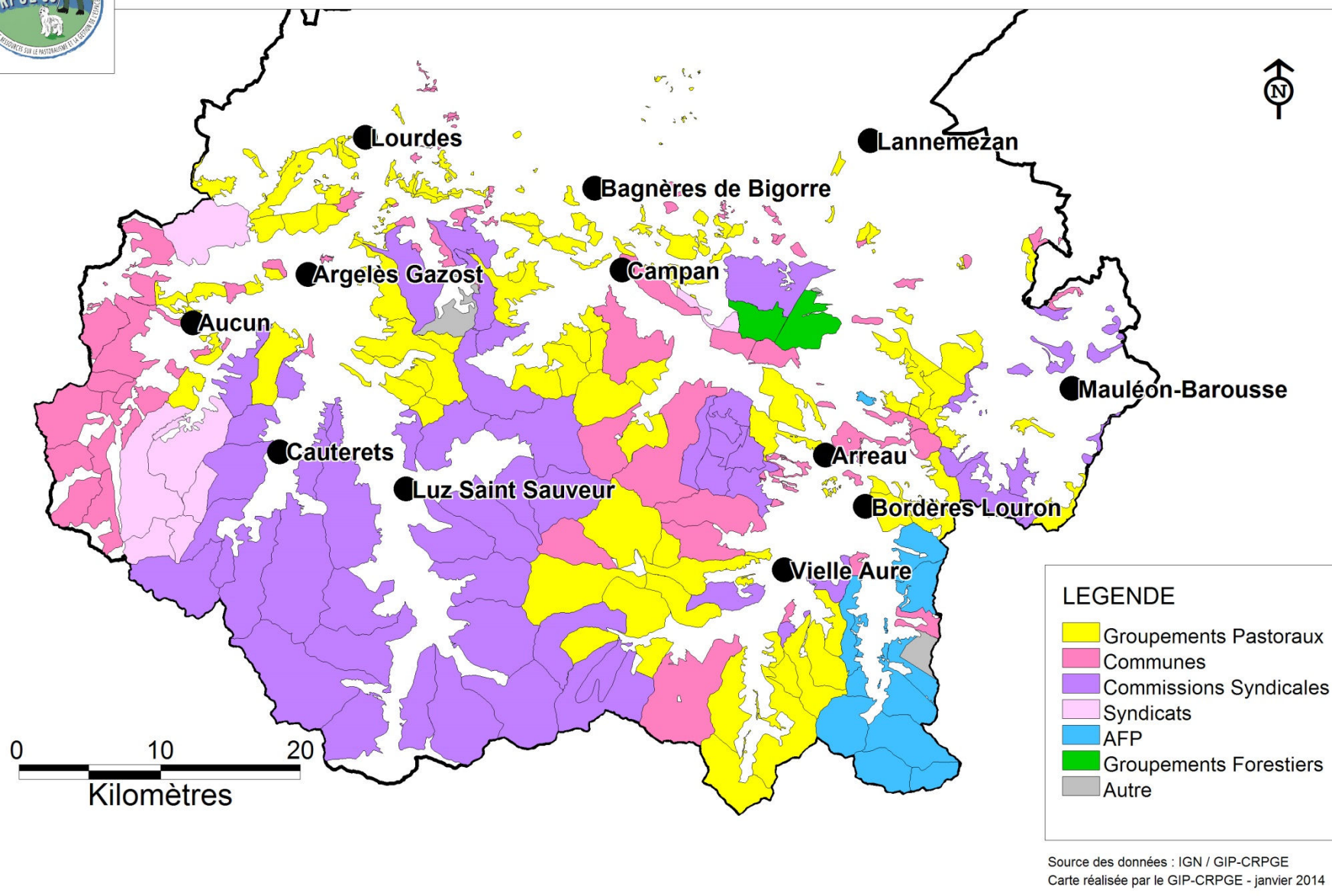
# Importance of local authorities

- 95% of 140 000 ha of common pasture belong to municipalities
- Common pastures , property of a single municipality are managed by municipalities ( 24 500 ha) or pastoral groups (37 500 ha)
- Common pastures, property of several municipalities (joint possession) are managed by unions of municipalities : the syndicale commissions (62 000 ha)





## Diversité des gestionnaires d'estives du 65



# Why municipalities or union municipalities manage common pasture ?

- Protect equity between the various uses
- Protect collective interests
- Maintain a role in agriculture development
- Maintain a link with farmers and their concerns

# Thanks

