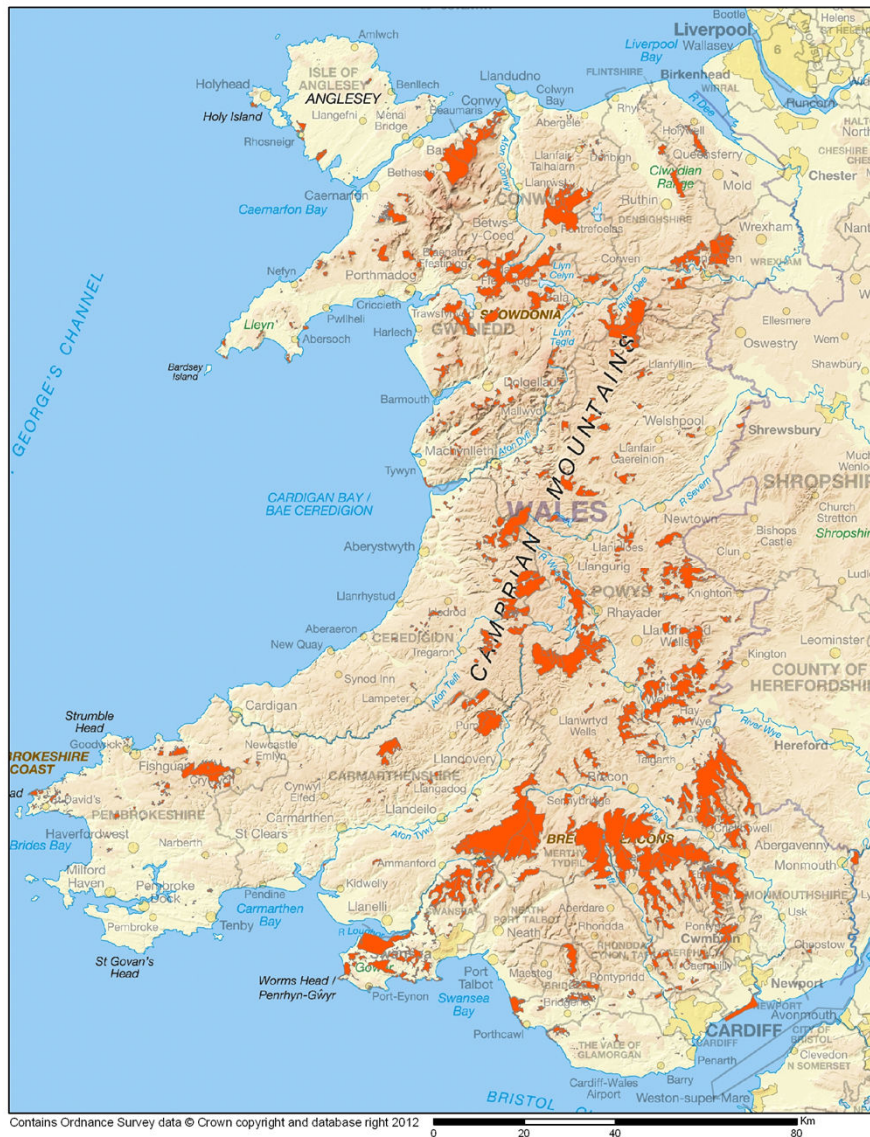


Commons Development Officers Network



141,748ha of registered common land

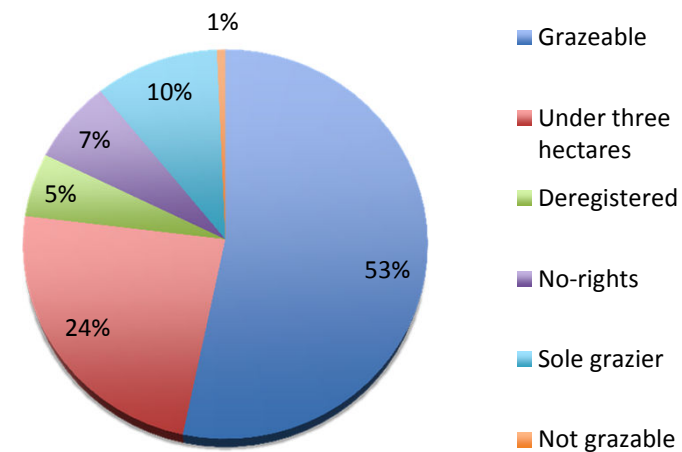
Demystifying the language

Service based in the community (LEADER)

Language, tradition and local circumstances

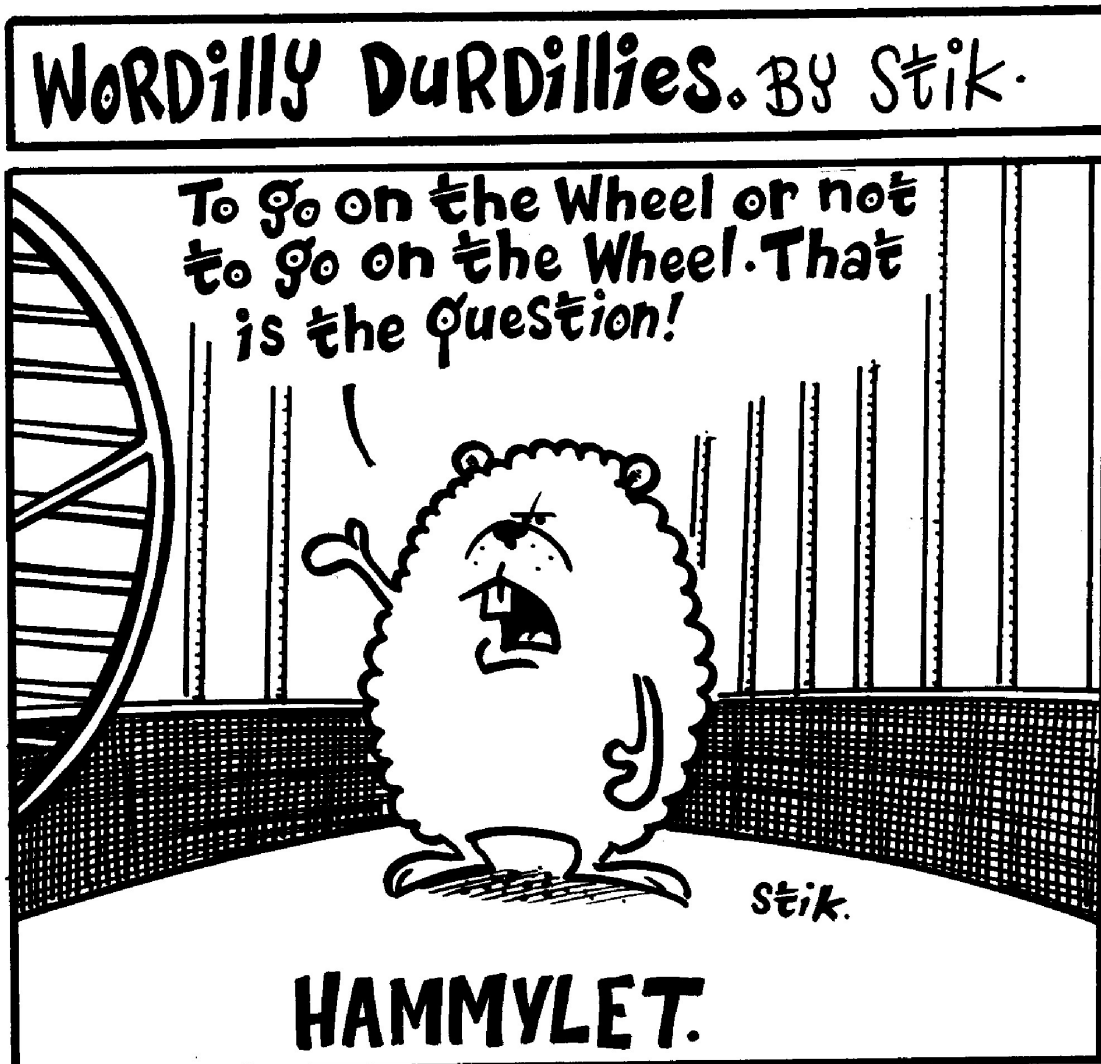
1888 Common Land Units (CL) of which

Sorting out the registers

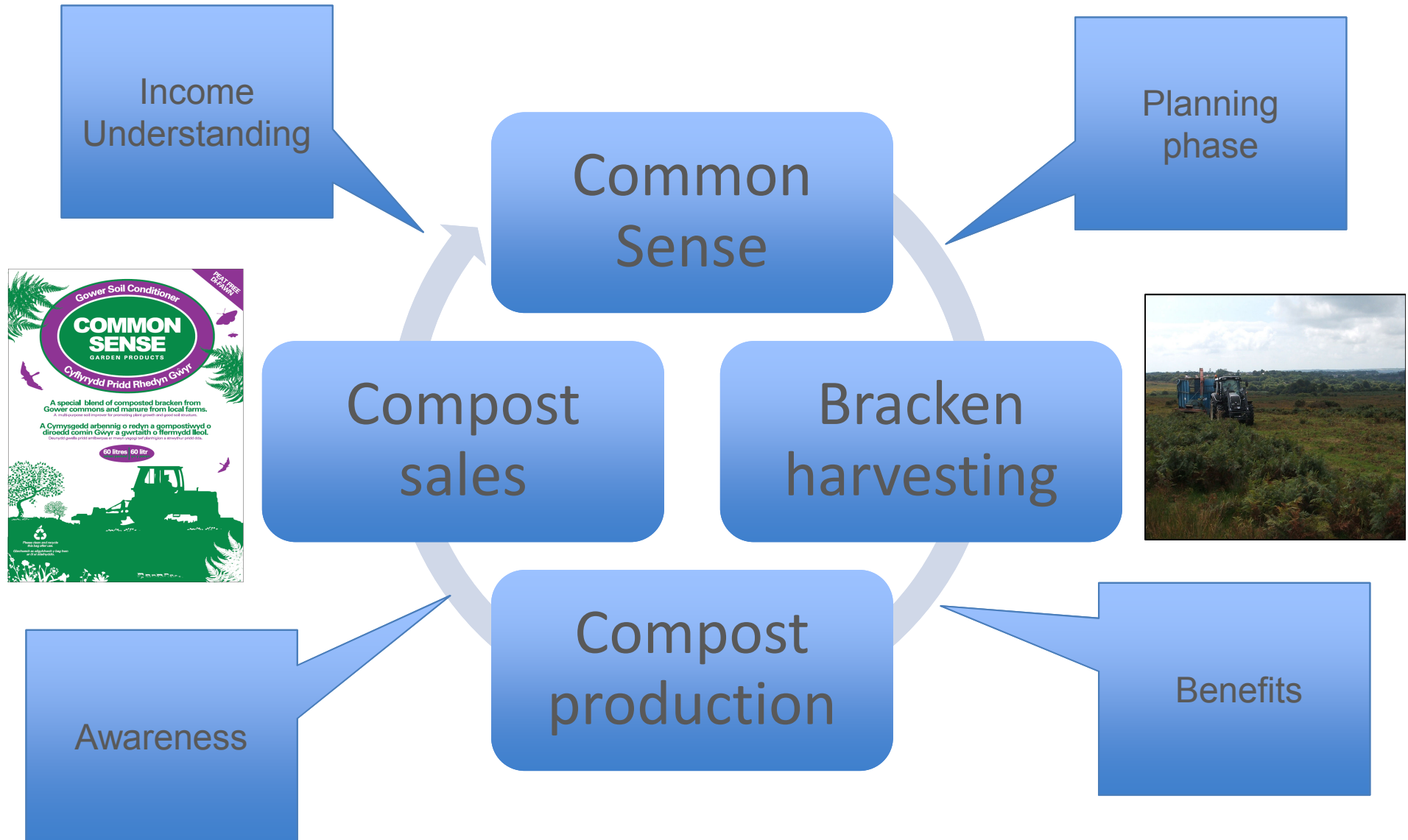


1006 Registered grazable CL units 92% of registered land

**A cost or a benefit –
taking an innovative approach to problem plants**



Bracken a cost benefit



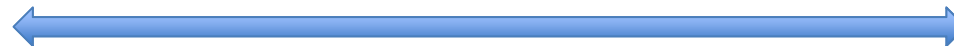
Restoration of historically mined commons to grassland



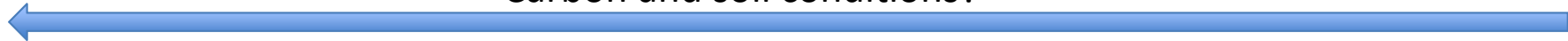
Invasive non native species



Habitat?



Carbon and soil conditions?

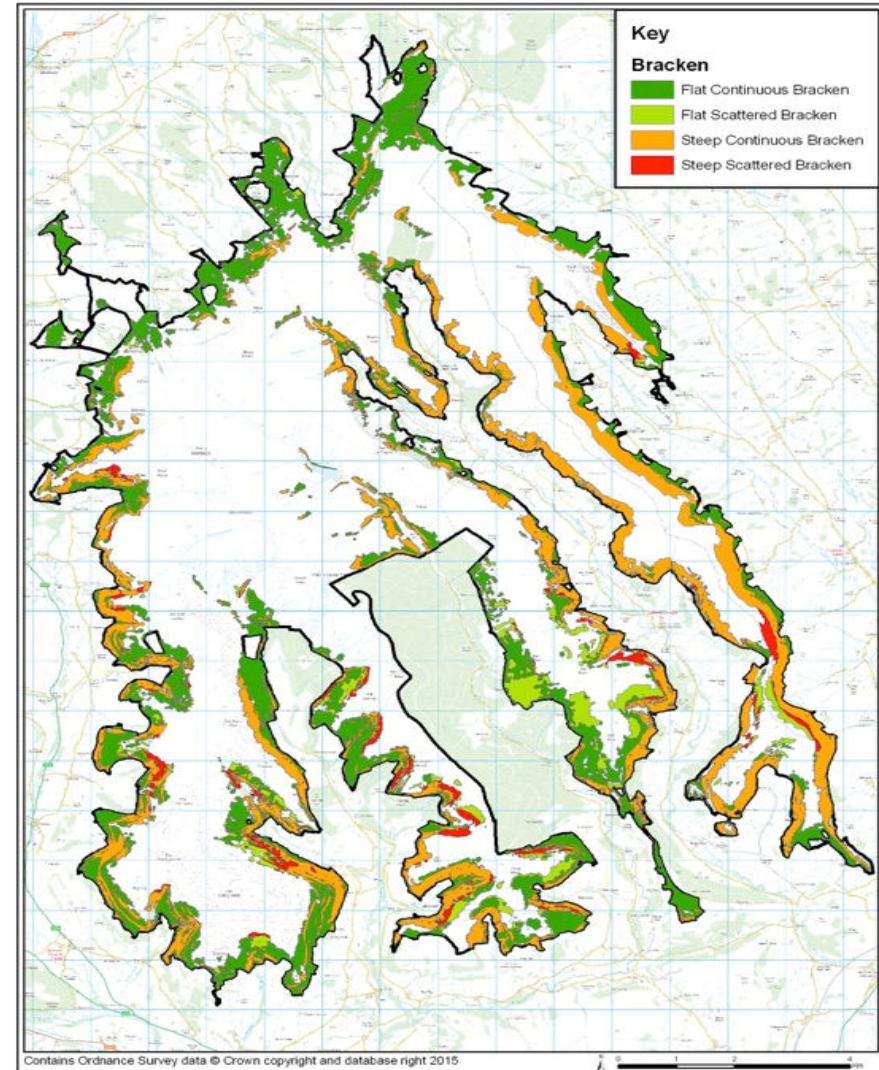


Ecosystem goods and services – balancing priorities and needs

*Showing the distribution of
bracken within the Black Mountains
between flat ground <20° and
steep ground >20°*



- Steep slopes (>20°) 1893ha
- Flatter ground (<20°) with 2006ha
- Dense bracken on steep slopes of 1719ha
- Dense bracken and flat 1696ha
- Scattered bracken on steep slopes 174ha
- Scattered bracken on flat ground 348ha

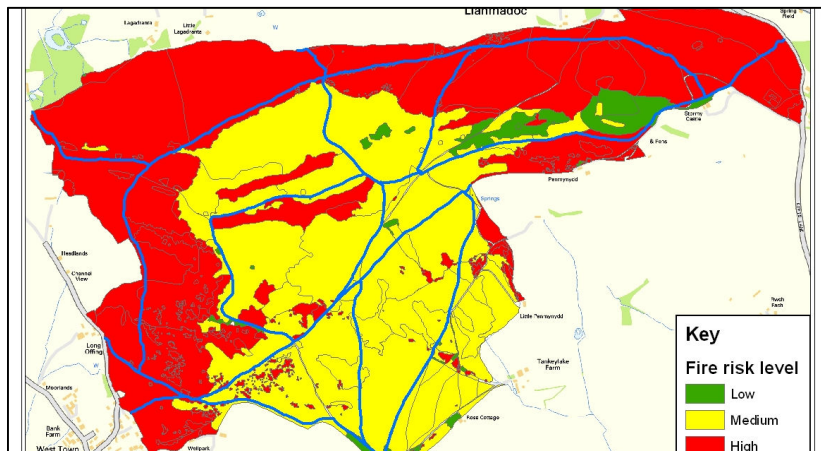


A question of burning

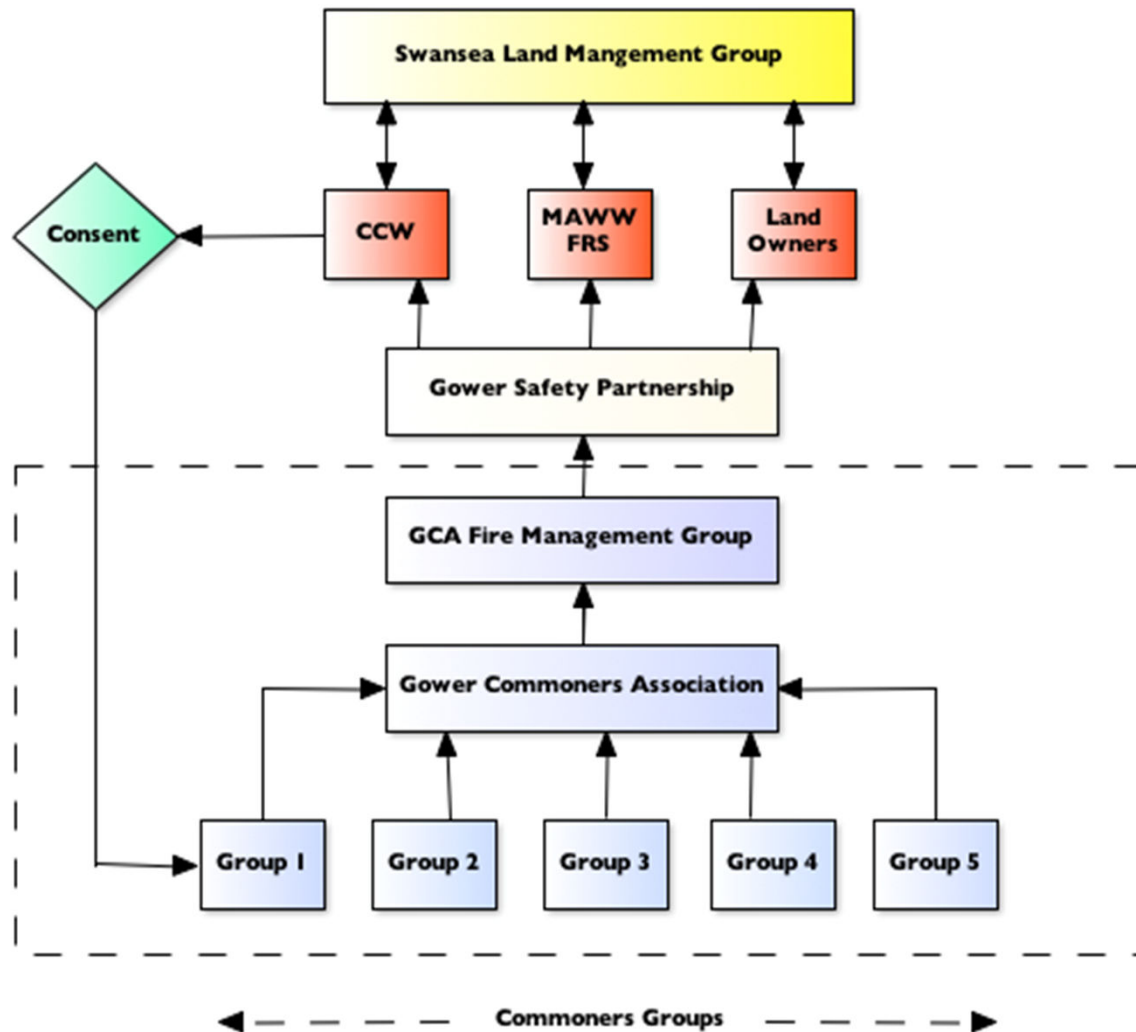


Dumping the jargon!!

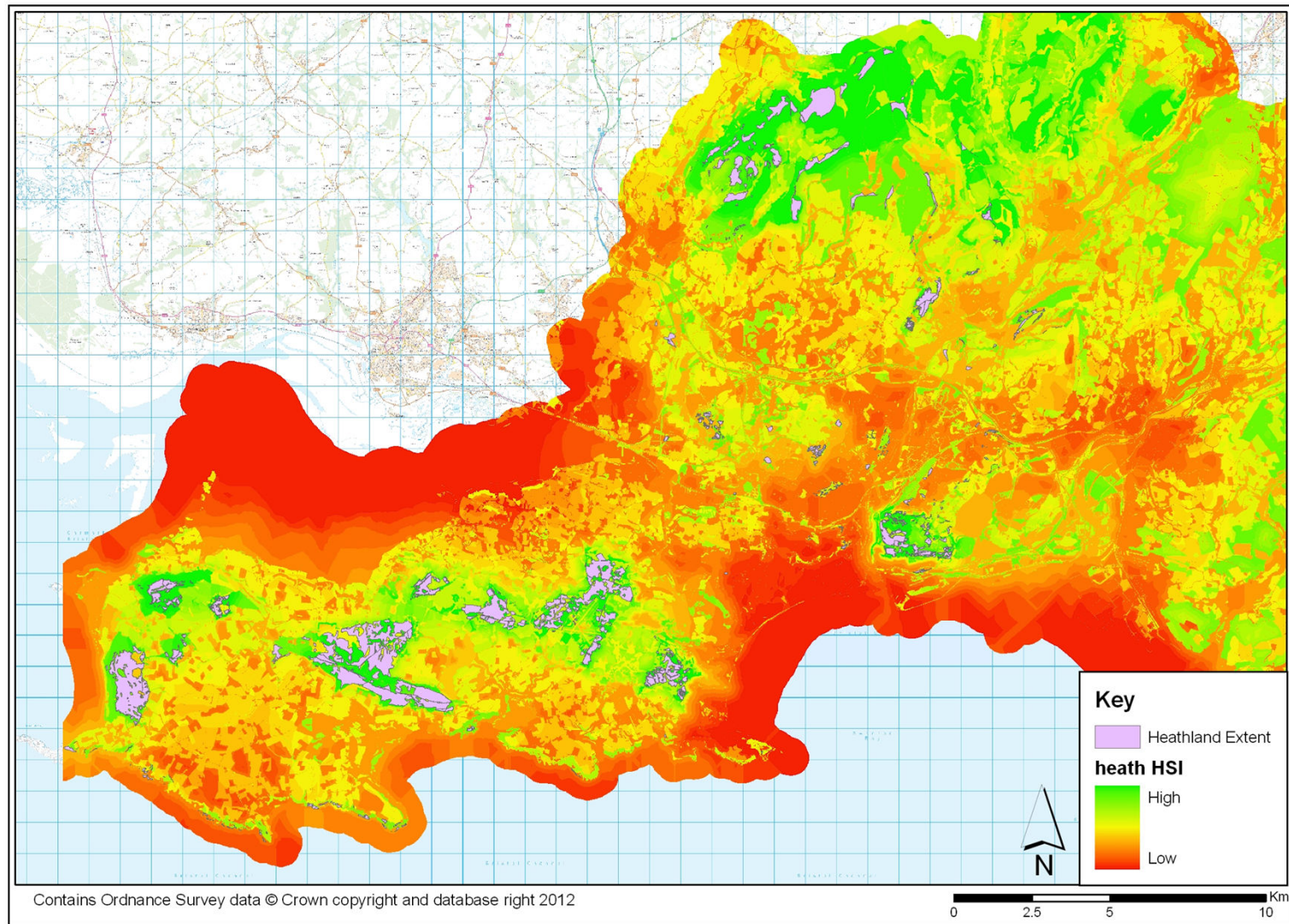
And planning for success



Working together for better burning outcomes



Commons and ecosystem connectivity

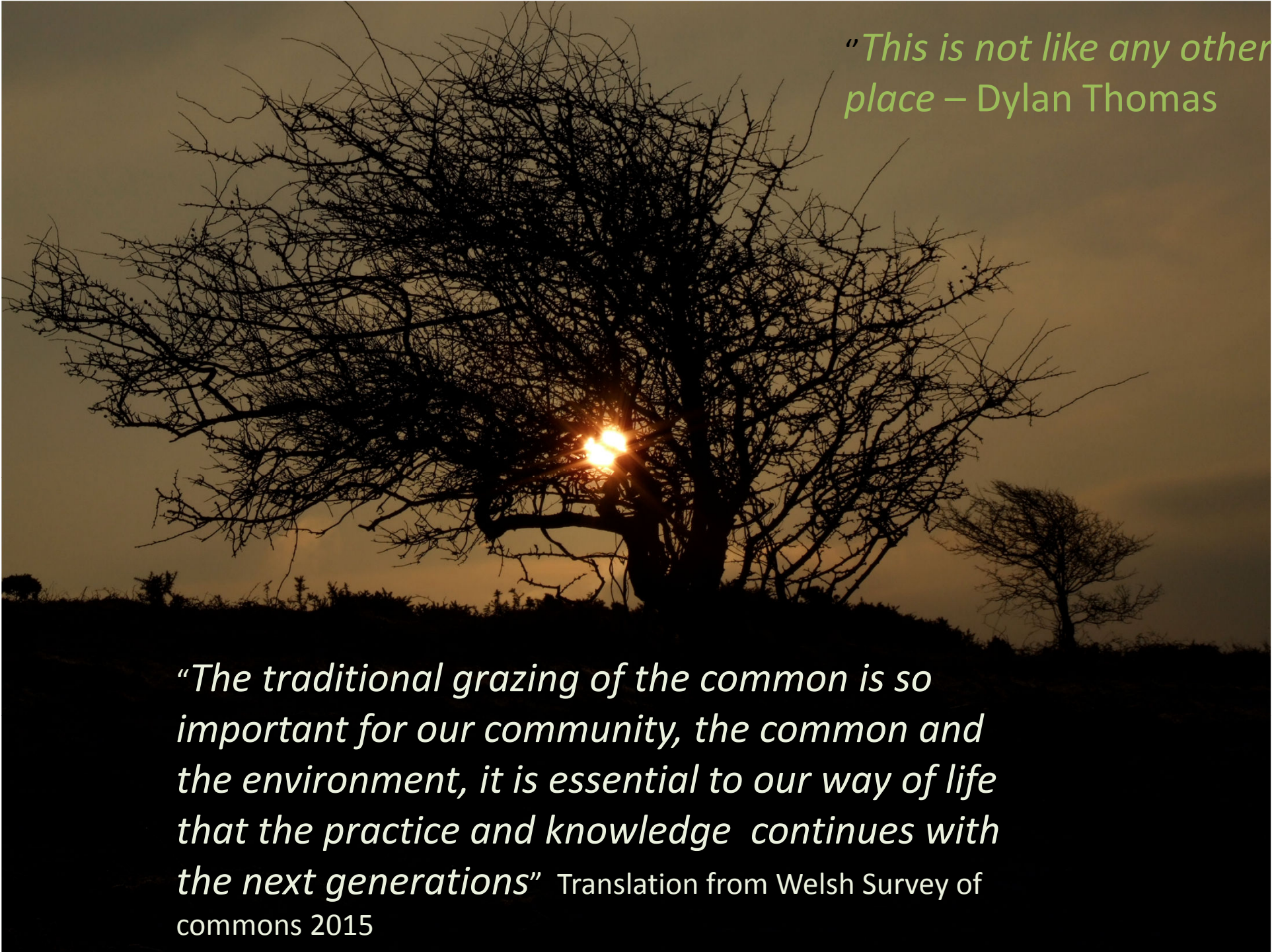


Grazing - biodiversity - people - valued and protected landscapes

Tackling loss –
community
education and
communication



“Coming together is a beginning. Keeping together is progress. Working together is success.”
Henry Ford 1930



*"This is not like any other
place – Dylan Thomas*

*"The traditional grazing of the common is so
important for our community, the common and
the environment, it is essential to our way of life
that the practice and knowledge continues with
the next generations"* Translation from Welsh Survey of
commons 2015

A LIFE CYCLE

