

# Environmental Land Management system

Background and context to Tests and Trials

**15 February 2019, Parke, Bovey Tracey**

“It is this Government’s ambition to leave our environment in a better state than we found it.”

“We will replace BPS with a system of public money for public goods”

“I believe the most important public good we should pay for is environmental protection and enhancement.”

The Rt Hon Michael Gove MP



## UK agriculture: context

- Agriculture accounts for 70% of the land use in the UK
- Agriculture employs over 500,000 people making up 1.5% of the UK workforce
- Food production accounts for a significant part of the food and drinks industry which is worth £18billion in exports

## UK environment: context

- Since 1990 greenhouse gas emissions have been cut by 42%
- Household recycling levels have quadrupled since the turn of the century
- Since 1970 nitrogen oxides have fallen by 69%



***ELM is a key mechanism for delivering selected goals of the 25 Year Environment Plan....***

**Which 6 environmental public goods will ELM help deliver?**

Thriving Plants & Wildlife



Clean and Plentiful Water



Beauty, Heritage & Engagement



Mitigation and adaption to Climate Change



Protection from and Mitigation of hazards



Clean Air



## The 25 Year Environment Plan is Launched



*"The environment is something personal to each of us, but it is also something which collectively we hold in trust for the next generation. And we have a responsibility to protect and enhance it"*

Theresa May, 11 January 2018

# 25 Year Environment Plan



## Our 25-year goals

### We will achieve:

- Clean air
- Clean and plentiful water
- Thriving plants and wildlife
- Reduced risk of harm from environmental hazards such as flooding and drought
- Using resources from nature more sustainably and efficiently
- Enhanced beauty, heritage and engagement with the natural environment

### We will manage pressures on the environment by:

- Mitigating and adapting to climate change
- Minimising waste
- Managing exposure to chemicals
- Enhancing biosecurity

***ELM is a key mechanism for delivering selected goals of the 25 Year Environment Plan***

**Thriving Plants  
& Wildlife**



**Clean and  
Plentiful Water**



**Beauty, Heritage  
& Engagement**



**Mitigation and adaption  
to Climate Change**



**Protection from and  
Mitigation of hazards**



**Clean Air**

# Now = complex

## CAP Direct Payments

87,000 farmers

Cross Compliance and Greening:

- 13 Statutory Requirements
- 11 GAEC
- 3 crop rule requirement
- Ecological Focus Area requirement
- Protection of Permanent Pasture



+ Application and Claim Forms

Overlap of requirements issues for land managers to juggle

## CAP Agri-Environment

c29,600 farmers (inc those still in pre 2014 HLS)

- CS Applicants then select from:
- Mid Tier (inc 4 wildlife offers)
  - Higher Tier
  - Woodland Capital
  - Hedgerows and Boundaries Capital
  - Historic Buildings Capital
  - Facilitation

=230 prescriptive (process based) options and items to select from



+ Application and Claim Forms  
Annual start dates

## Future ELM

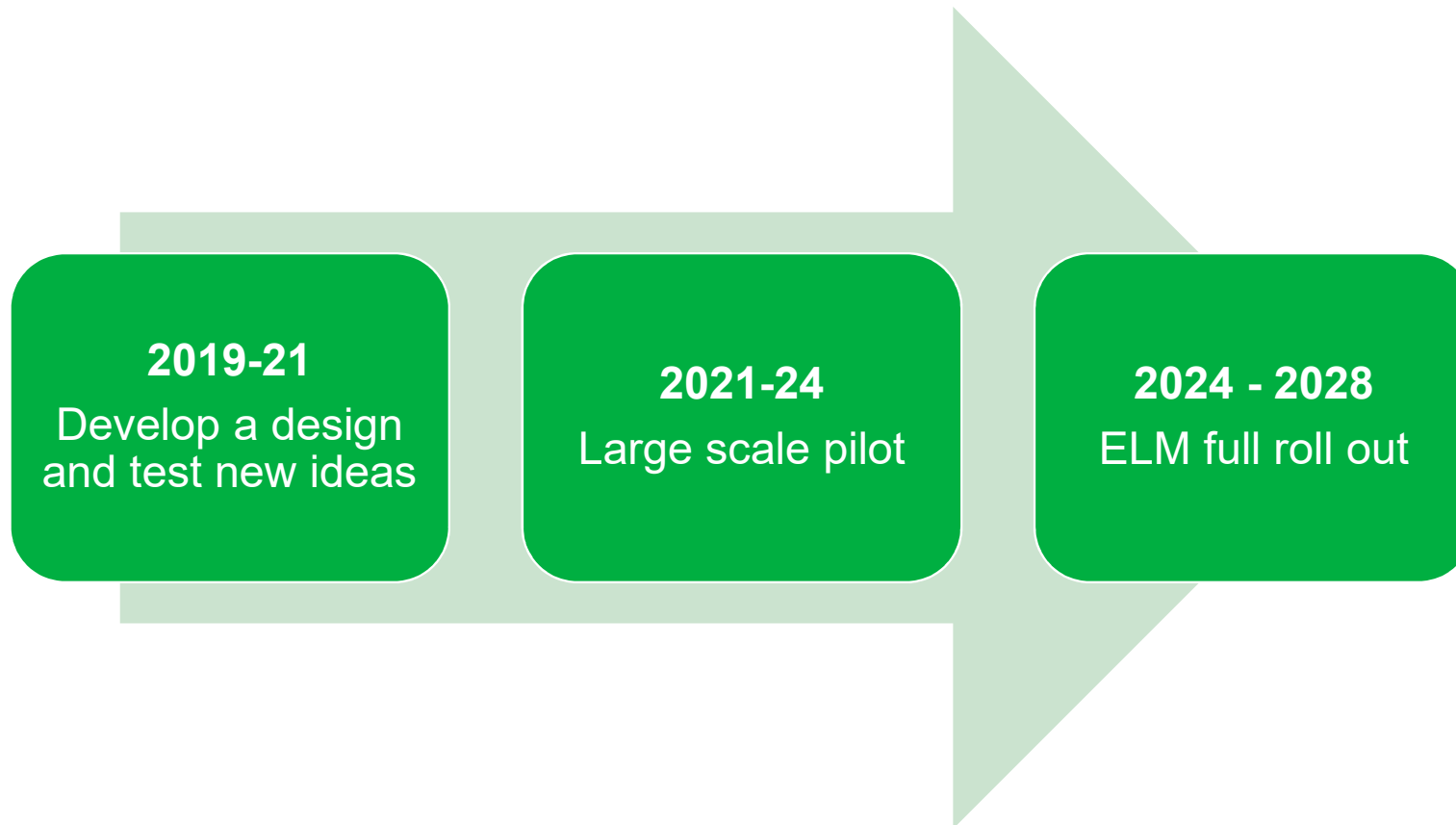
- Beyond regulation
- One, flexible contract
- Clear consistent guidance
- Widest possible uptake



# ELM's guiding themes

- **Voluntary** – a meaningful income stream, alongside commercial sources, for land managers who choose to deliver environmental benefits
- **Flexible approach** – to delivering local and national priorities, multi annual contracts
- **Putting land managers in control** – the ability to choose which outcomes they deliver and how they do so
- **Accessible to land managers who can and want to deliver environmental benefits**
- **The inclusion of innovative mechanisms** to measure and value outcomes

# Current Timeframe



## Tests and Trials

- To **test** different approaches for ELM that could help make it:
  - User friendly
  - Administratively simple to deliver
  - Environmentally and cost effective
  - Outcome focussed - indicators
- To **trial** practical approaches to ELM. This may include:
  - **New or innovative approaches** such as payment by results and reverse auctions
  - **Outcome Prioritisation and Coordination**
  - **Valuing** environmental outcomes

## Tests and Trials

- **Tests and Trials** are taking **Phase 1** proposals forward this month
- Project Officers are working with proposal holders to scope, refine and cost up selected proposals
- Following this, tests and trials will be assessing objectives across all proposals

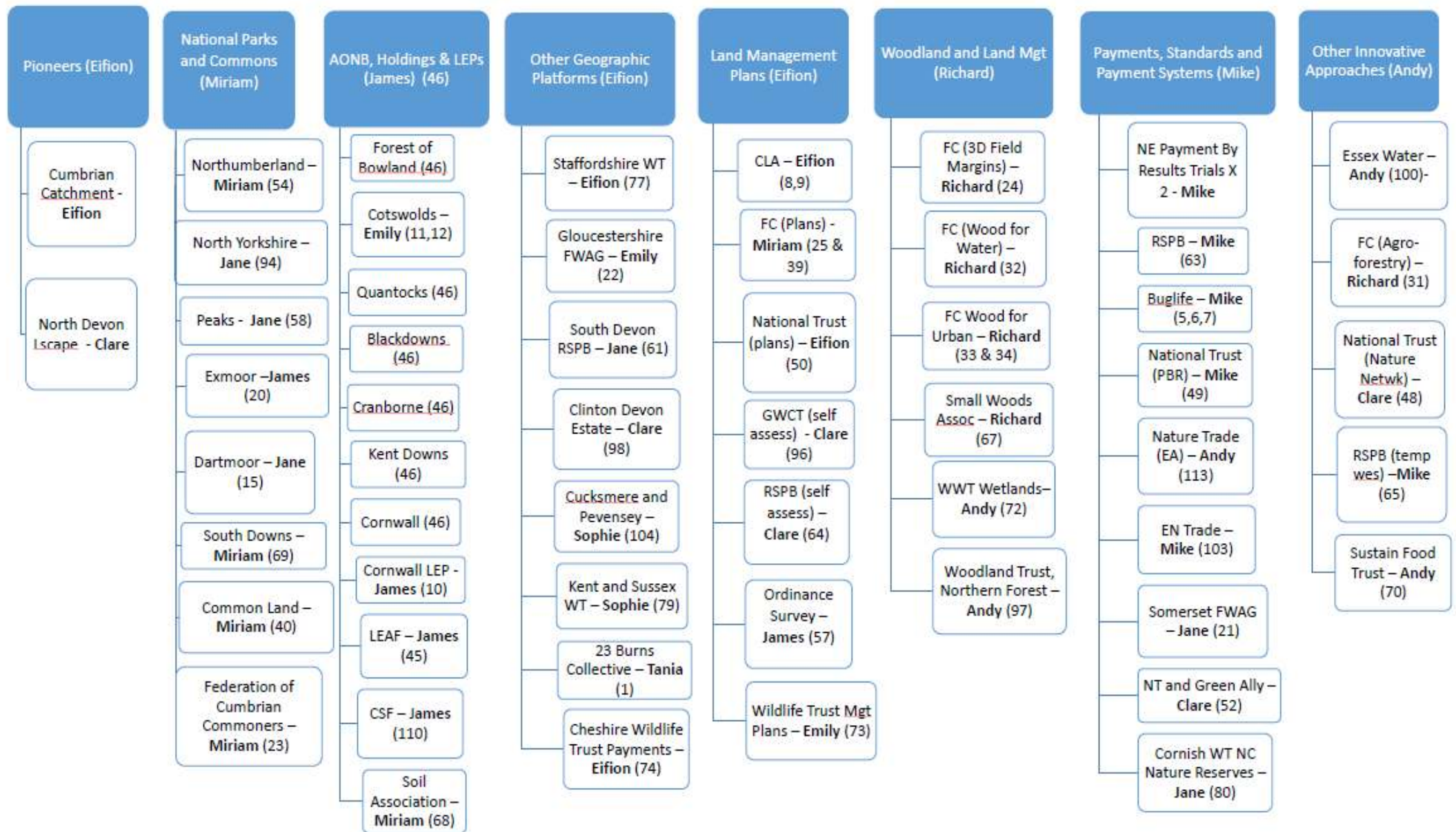
### **Emerging themes:**

Innovative payment mechanisms

Natural capital assessment tools

Targeting specific outcomes

Work on the land management plan (CSFF groups)



**Pioneers (Eifion)**

- Cumbrian Catchment - Eifion
- North Devon Lscape - Clare

**National Parks and Commons (Miriam)**

- Northumberland - Miriam (54)
- North Yorkshire - Jane (94)
- Peaks - Jane (58)
- Exmoor - James (20)
- Dartmoor - Jane (15)
- South Downs - Miriam (69)
- Common Land - Miriam (40)
- Federation of Cumbrian Commoners - Miriam (23)

**AONB, Holdings & LEPs (James) (46)**

- Forest of Bowland (46)
- Cotswolds - Emily (11,12)
- Quantocks (46)
- Blackdowns (46)
- Cranborne (46)
- Kent Downs (46)
- Cornwall (46)
- Cornwall LEP - James (10)
- LEAF - James (45)
- CSF - James (110)
- Soil Association - Miriam (68)

**Other Geographic Platforms (Eifion)**

- Staffordshire WT - Eifion (77)
- Gloucestershire FWAG - Emily (22)
- South Devon RSPB - Jane (61)
- Clinton Devon Estate - Clare (98)
- Cucksmere and Pevensey - Sophie (104)
- Kent and Sussex WT - Sophie (79)
- 23 Burns Collective - Tania (1)
- Cheshire Wildlife Trust Payments - Eifion (74)

**Land Management Plans (Eifion)**

- CLA - Eifion (8,9)
- FC (Plans) - Miriam (25 & 39)
- National Trust (plans) - Eifion (50)
- GWCT (self assess) - Clare (96)
- RSPB (self assess) - Clare (64)
- Ordinance Survey - James (57)
- Wildlife Trust Mgt Plans - Emily (73)

**Woodland and Land Mgt (Richard)**

- FC (3D Field Margins) - Richard (24)
- FC (Wood for Water) - Richard (32)
- FC Wood for Urban - Richard (33 & 34)
- Small Woods Assoc - Richard (67)
- WWT Wetlands - Andy (72)
- Woodland Trust, Northern Forest - Andy (97)

**Payments, Standards and Payment Systems (Mike)**

- NE Payment By Results Trials X 2 - Mike
- RSPB - Mike (63)
- Buglife - Mike (5,6,7)
- National Trust (PBR) - Mike (49)
- Nature Trade (EA) - Andy (113)
- EN Trade - Mike (103)
- Somerset FWAG - Jane (21)
- NT and Green Ally - Clare (52)
- Cornish WT NC Nature Reserves - Jane (80)

**Other Innovative Approaches (Andy)**

- Essex Water - Andy (100)
- FC (Agro-forestry) - Richard (31)
- National Trust (Nature Netwk) - Clare (48)
- RSPB (temp wes) - Mike (65)
- Sustain Food Trust - Andy (70)

## Tests & Trials – Key Milestones Jan-April 2019

