

Welcome to Vilm Island

2nd International workshop on pastoral landscapes and conservation

Large-scale extensive grazing systems in Europe:
advancing knowledge to improve policy

20–24 September 2010
organised by

University of Rottenburg, EFNCP and the German Federal Agency for Nature
Conservation

at the International Academy for Nature Conservation Isle of Vilm

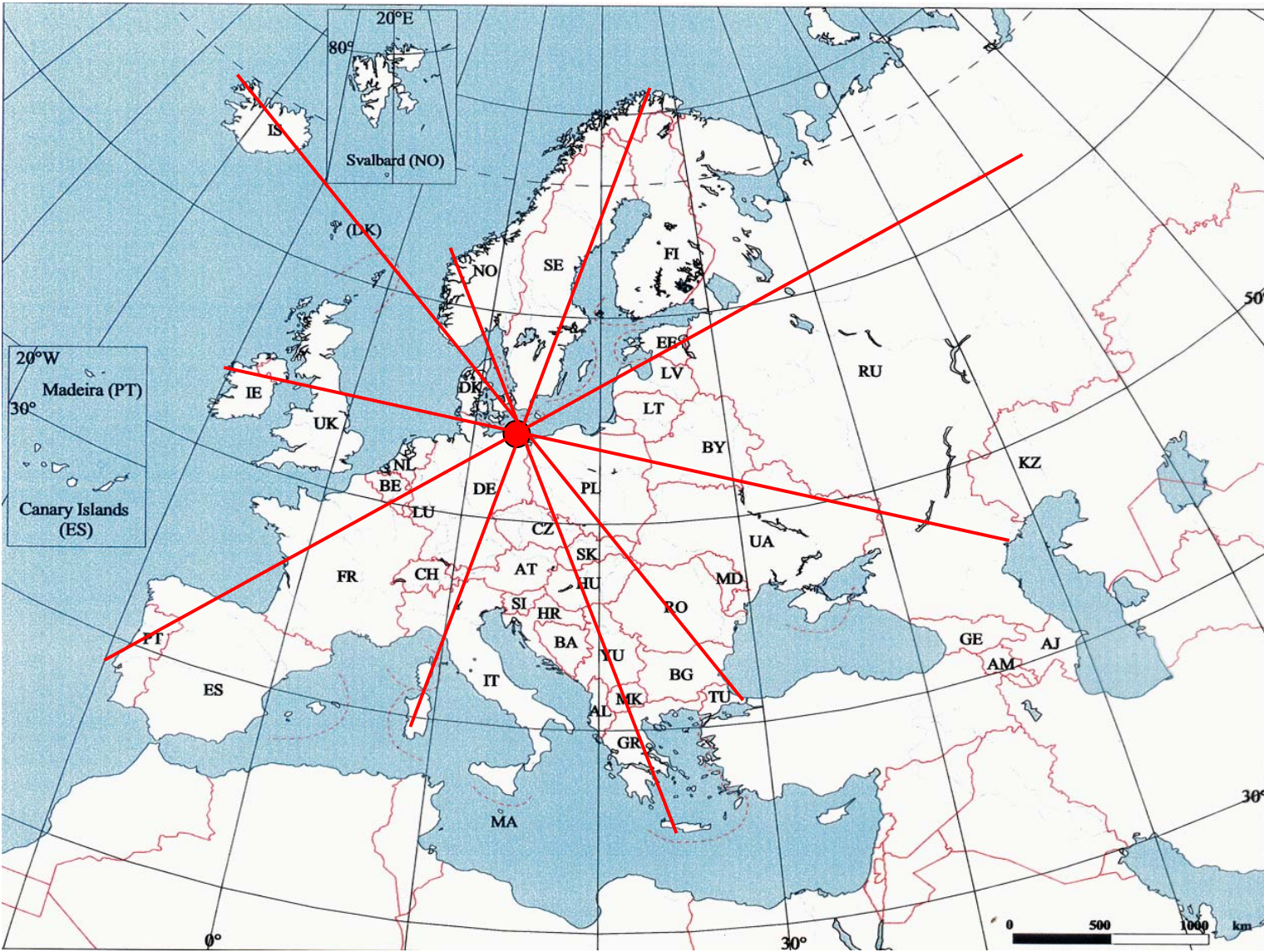
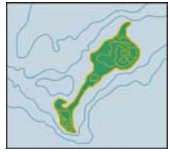
In co-operation with



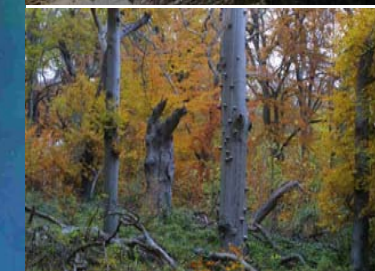
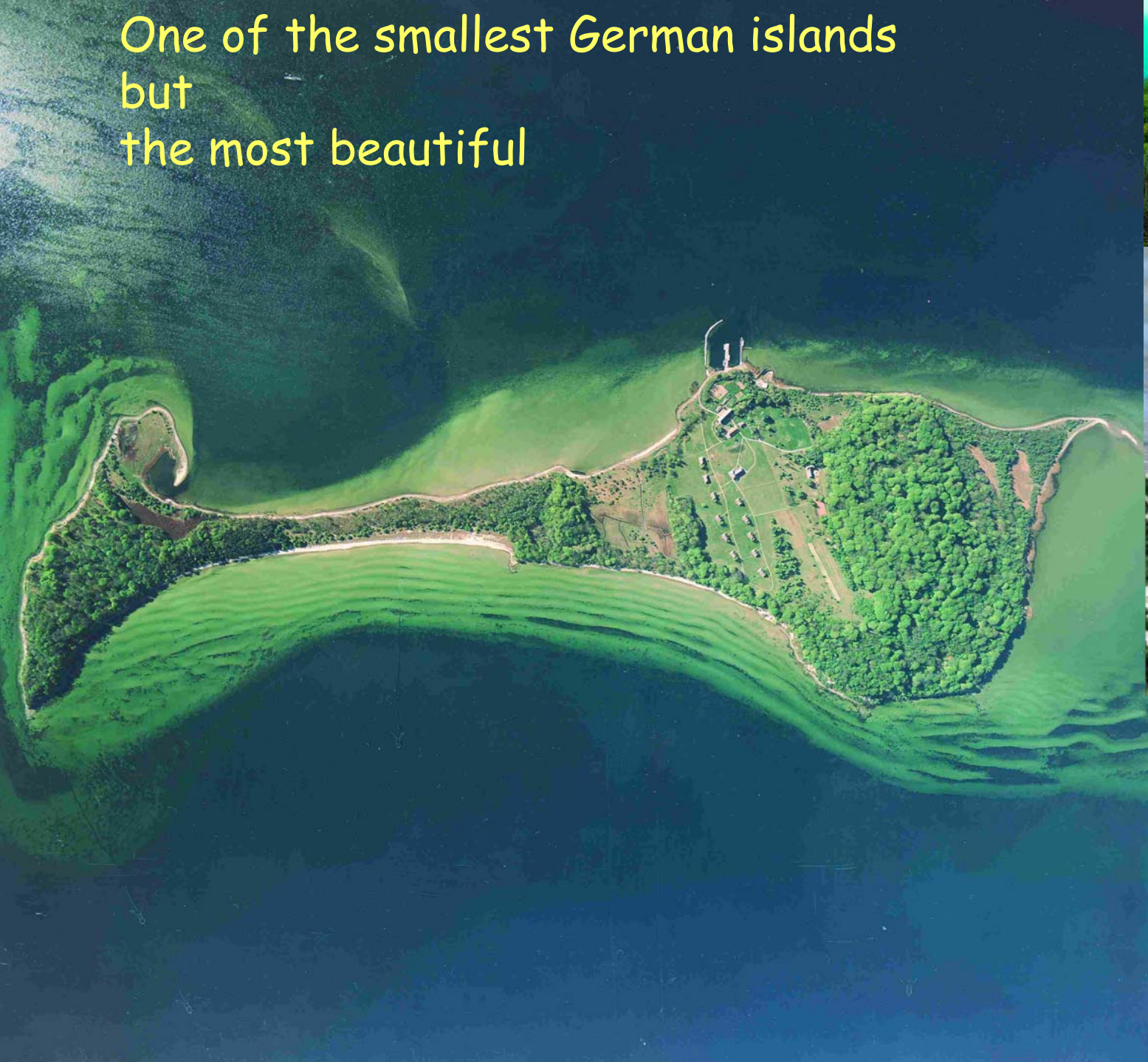
Tonight

- Introduction to Vilm
- Technical announcements
- Introduction of participants:
short, only 3 items

Isle of Vilm - Location in Europe



One of the smallest German islands
but
the most beautiful





Last "primeval" forest of Germany

One of the oldest nature reserves in Germany:

Isle of Vilm (94 ha): Protected area since 1936
Core zone of the biosphere reserve
„Southeast Rügen“ (1990)



Vilm - An island with a special history



Site of a chapel in the middle ages (from 1336)

(Key of the chapel, twelve apostle oak tree)



Artists' colony in 19th/20th century



Nature lovers' destination

(hotel constructed in 1886)

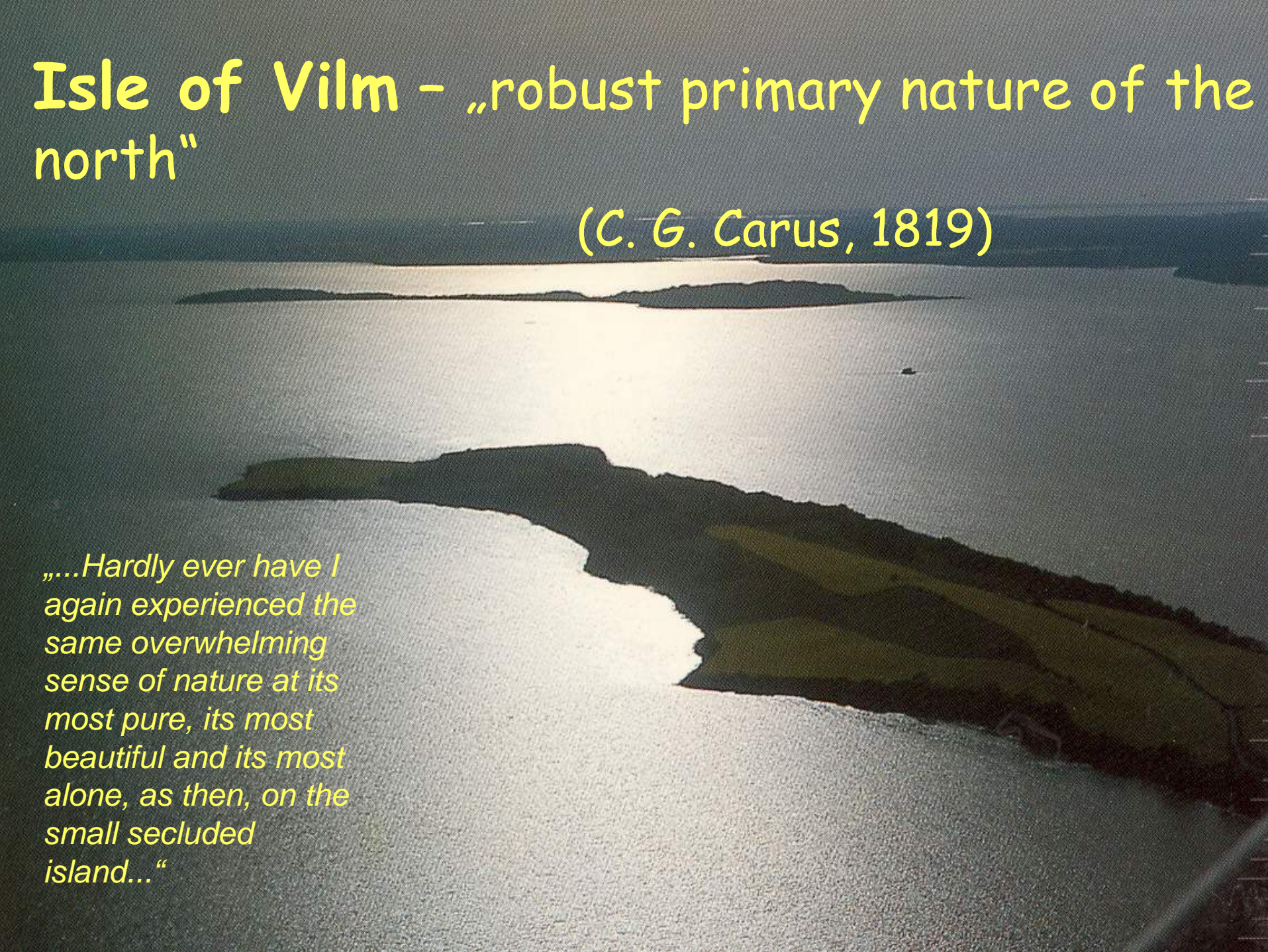


Holiday resort of the GDR-Council of Ministers (1960-1990)

Isle of Vilm - „robust primary nature of the north“

(C. G. Carus, 1819)

„...Hardly ever have I again experienced the same overwhelming sense of nature at its most pure, its most beautiful and its most alone, as then, on the small secluded island...“





INA Isle of Vilm -



Outcome of the reunification
1990

6 October 1990 -
The Federal Minister
for the Environment,
Prof. Klaus Töpfer
inaugurates the
International Academy
for Nature Conservation
Isle of Vilm



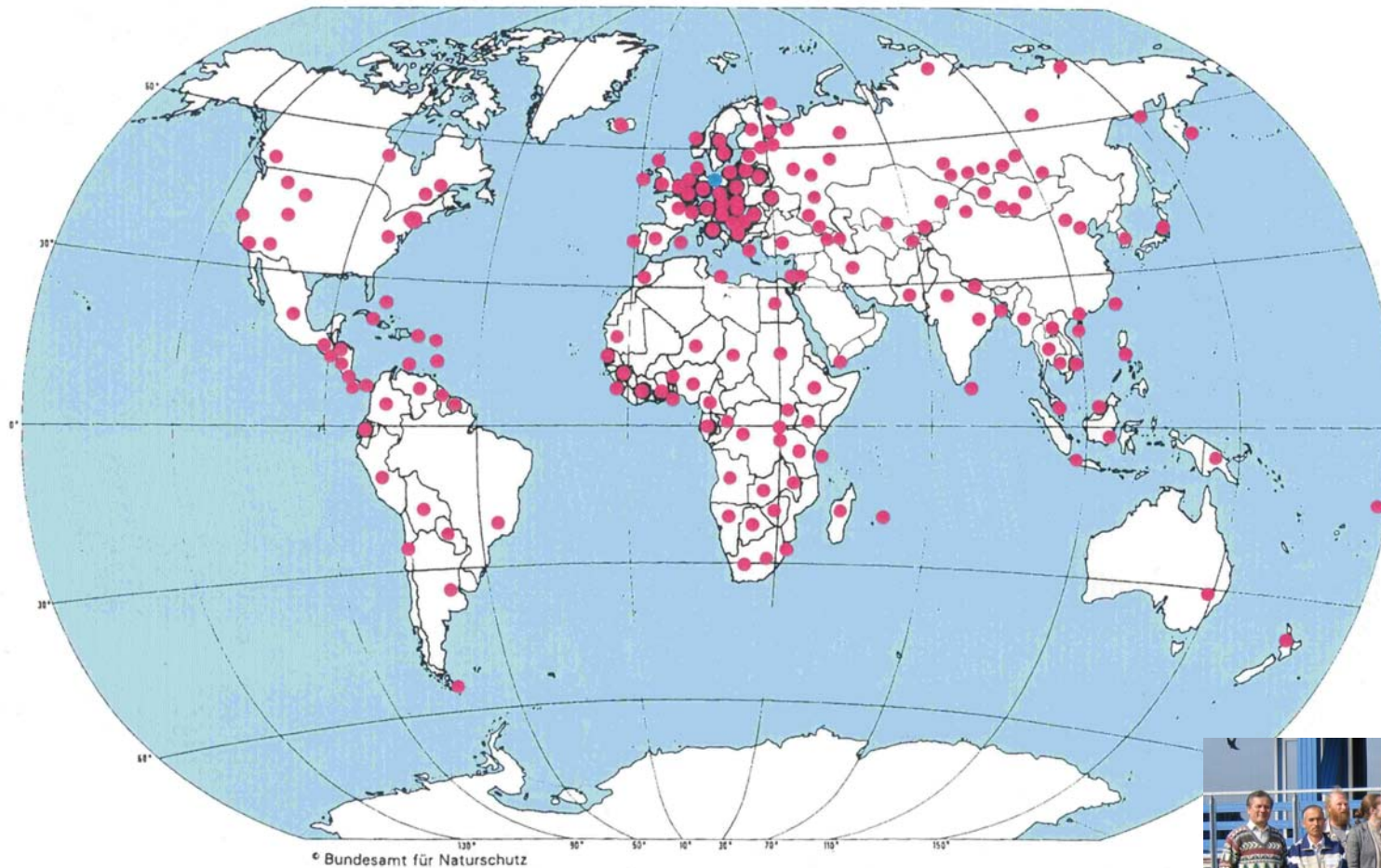
About 80 workshops a year

INA Isle of Vilm - International Activities:

- ▶ Advancement of international conventions and regulations (CBD, World Heritage, Marine Conservation)
- ▶ Training and advisory services in the implementation of international conventions
- ▶ Capacity building for mainly Eastern Europe on further conservation issues
- ▶ Promoting nature conservation issues in the work of the German development cooperation



INA Isle of Vilm – participants from all over the world



INA Isle of Vilm – national forum for conservation



- basic strategic, political and societal questions of nature conservation
- conservation concepts and instruments
- nation wide exchange of experiences



Two more departments on Vilm:

- Department of biodiversity and climate change
- Department of marine and coastal nature conservation

All in all 60 members of staff on Vilm island

Head office in Bonn

Environmental management on Vilm



Energy saving by
insulation

Organic food



Solar panels for generating electricity:

Since December 2002

electricity produced
CO₂ avoided

Solar thermal panels planned for 2010/2011







Technical announcements



Mealtimes

- 7.30 - 9.00 Breakfast
- 12.30 Lunch
- 18.30 Dinner

• *Please be on time!!!*



Conference facilities

- 3 computers with Internet access
- W-Lan in the conference building
- All houses equipped with internet access (please make sure that in your network configurations the IP address is set on AUTOMATIC)
- 1 printer
- 1 photocopier
- CD player
- TV station
- for fax, please consult reception



Strict Non-Smoking Policy!!!



Smoke alarm in each house
Night guard: phone 91

Payments

Reception: open 08.30-17.00h

- Phone calls
- Bill for board and lodging (EC card, credit card)
- Postcards...

Service ladies:

- Refreshments, etc.
- Shampoo, toothbrush etc.
- Ironing and laundry service



Introduction

- What's my name, my country, my institution?
- What's my professional background, my interest in this conference?
- I will be satisfied with the conference, if...

Enjoy your stay at the Isle of Vilm !

